

FEHR PEERS

Michael Baker  
INTERNATIONAL



# HEPMPO

## WV 9 Bike Path Connectivity Plan

December 16, 2025

Public Workshop



# Meeting Agenda

---

**01** PROJECT TEAM

**02** PROJECT OVERVIEW

**03** PROJECT SCHEDULE

**04** OPPORTUNITIES

**05** ISSUES & CONCERNS

**06** OUTREACH & ENGAGEMENT

**07** ROUTE ALIGNMENT ALTERNATIVES

**07** WORKSHOP & PUBLIC COMMENT



# Project Team



**MATT MULLENAX**  
Executive Director  
HEPMPO



**MICHAELA MCDONOUGH**  
Transportation Planner  
HEPMPO



**JIM FRAZIER**  
MBI Team Manager  
Michael Baker



**REBECCA BANKARD**  
Project Manager  
Michael Baker



**MIKE SZILAGYI**  
Bike Path Specialist  
Michael Baker



**BROOKS KEHLER**  
Data Analysis  
Michael Baker



**TORY GIBLER**  
Transportation Planner  
Fehr & Peers



**CHARMELIS REYES**  
Transportation Planner  
Fehr & Peers

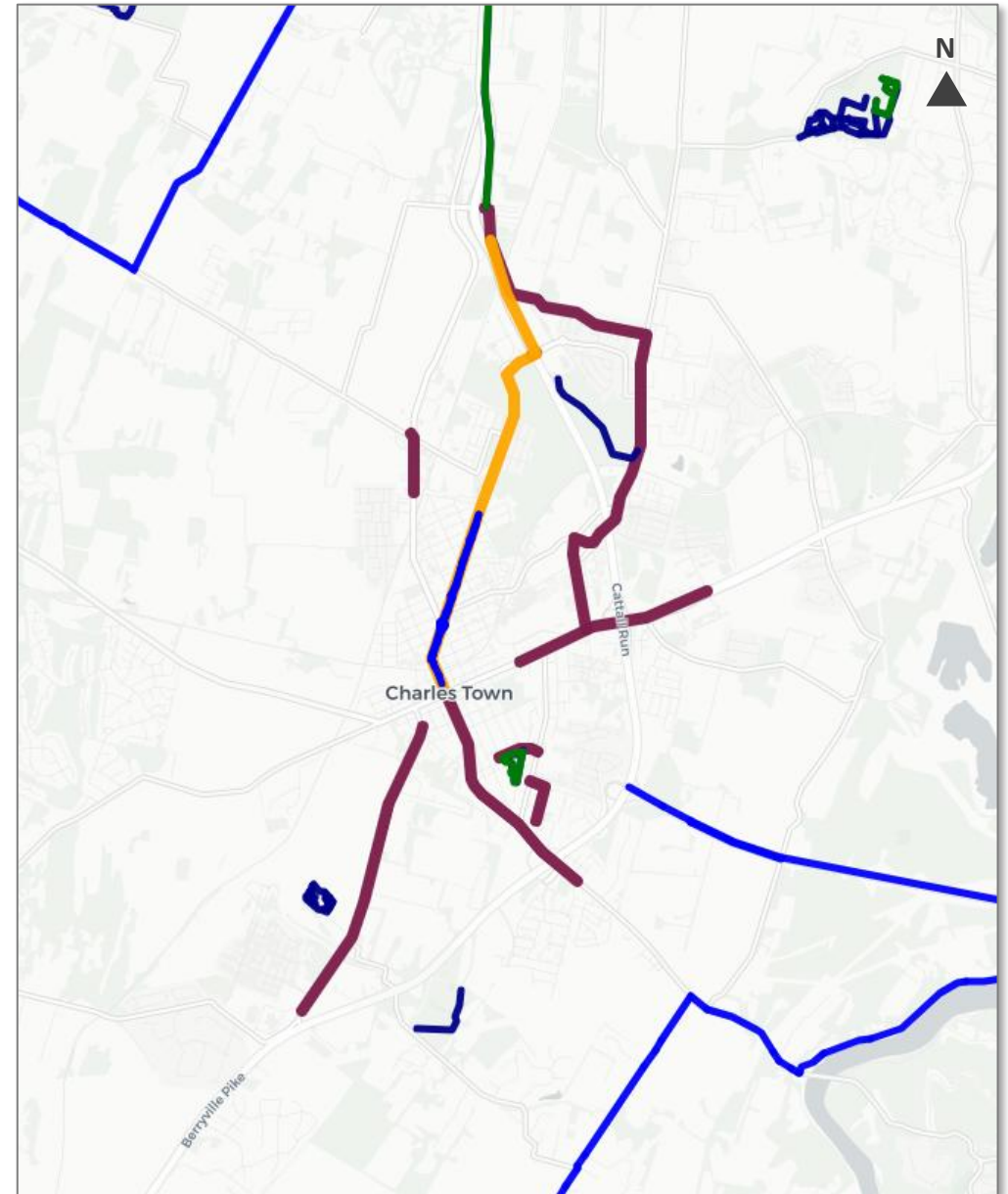
# Project Overview

# Project Purpose

- Builds upon HEPMPO Regional Bicycle and Pedestrian Plan Recommendation
  - Extend existing bike path through Ranson or along Flowing Springs Road to Washington Street in Charles Town
- Evaluate and propose solutions for extending the WV Route 9 Bike Path to Charles Town, WV.

## Goal:

- Enhance safety, accessibility, and connectivity
- Promote sustainable transportation
- Promote recreational opportunities

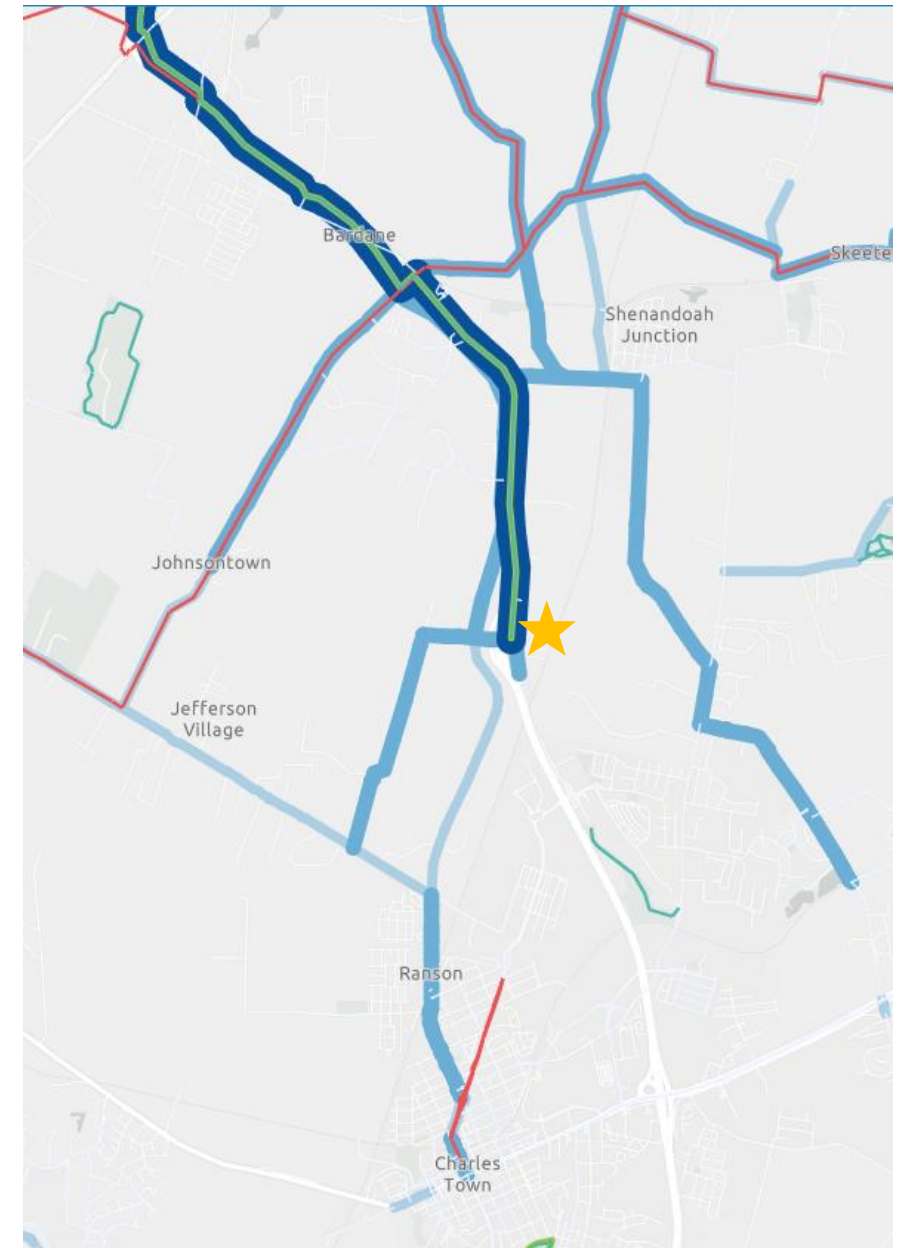
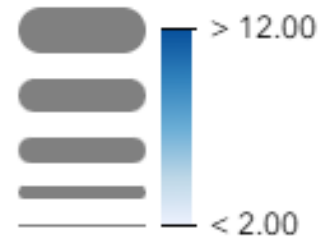


# Existing Path Overview

- WV 9 Route Bike Path
  - Approx. 10 miles long
  - Currie Road to Grapevine Road
- WV 9 Route Bike Path Extension
  - Approx.  $\frac{3}{4}$  of a mile
  - Grapevine Road to Frog Hollow Recreational Trail

- HEPMPO Trails (Existing)
- HEPMPO Shared Lane or Bicycle Route (Existing)
- ★ Route End Point

## Strava Data



# On-going Activities

## Studies & Plans

- HEPMPO Regional Safety Action Plan
- HEPMPO Regional Bicycle and Pedestrian Plan
- HEPMPO LRTP
- City of Charles Town Comprehensive Plan
- City of Ranson Pedestrian Bridge Feasibility Study\*
- City of Ranson Comprehensive Plan
- Jefferson County Comprehensive Plan

*\*On-going study*

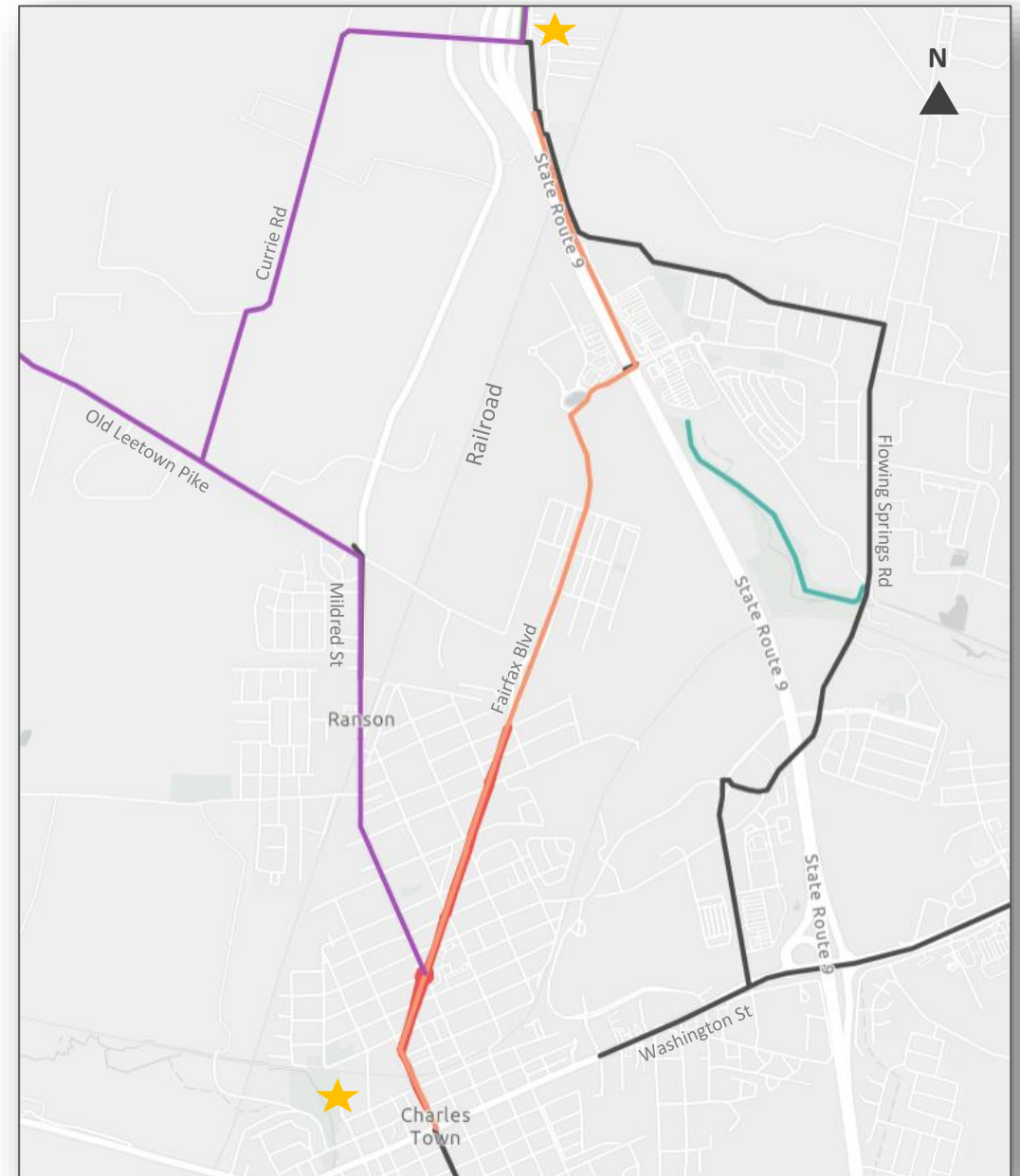
## Developments

- Ranson Elementary School (Institutional)
- Wawa Convenience Store (Commercial)
- Potomac Towne Center (Commercial)
- President's Point (Residential)
- Strider Property (Residential)
- Huntwell (Residential)
- Shenandoah Springs (Residential)
- Briar Run (Residential)
- Ranson Heights (Residential)
- Lakeland Place (Residential)
- Red Clover Meadows (Residential)
- Kable Townhomes (Residential)
- West Branch Apartments (Residential)
- Madison Greens (Residential)

# Bike Routes Identified in Previous Studies

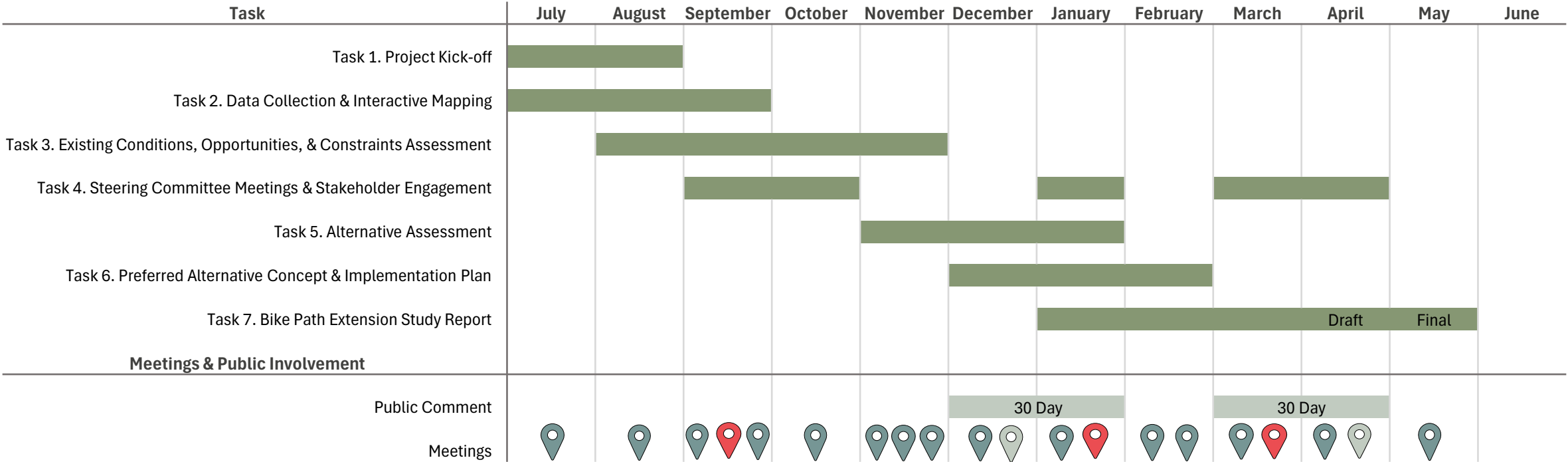
## Legend

- Currie Rd Path Extension (Recommendation)
- Fairfax Blvd Path Extension (Recommendation)
- Draft Projects Idea (Recommendation)
- HEPMPO Trails (Existing)
- HEPMPO Shared Lane or Bicycle Route (Existing)
- ★ Route Start and End Points





# Project Schedule



Coordination Meeting



Stakeholder Group Meetings



Public Meetings

# Opportunities



# Opportunities

## Charles Town





# Opportunities





# Issues & Concerns





Topography



Railroad Crossing



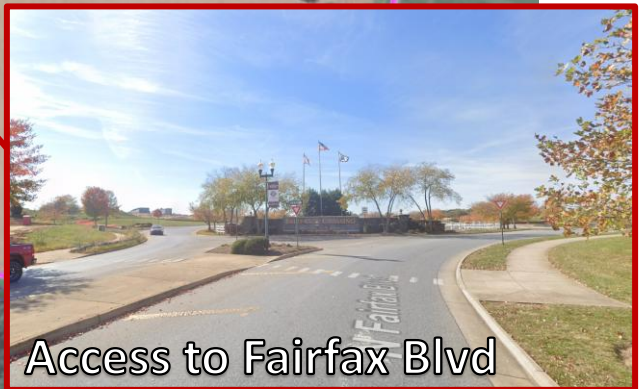
WV 9 Crossing



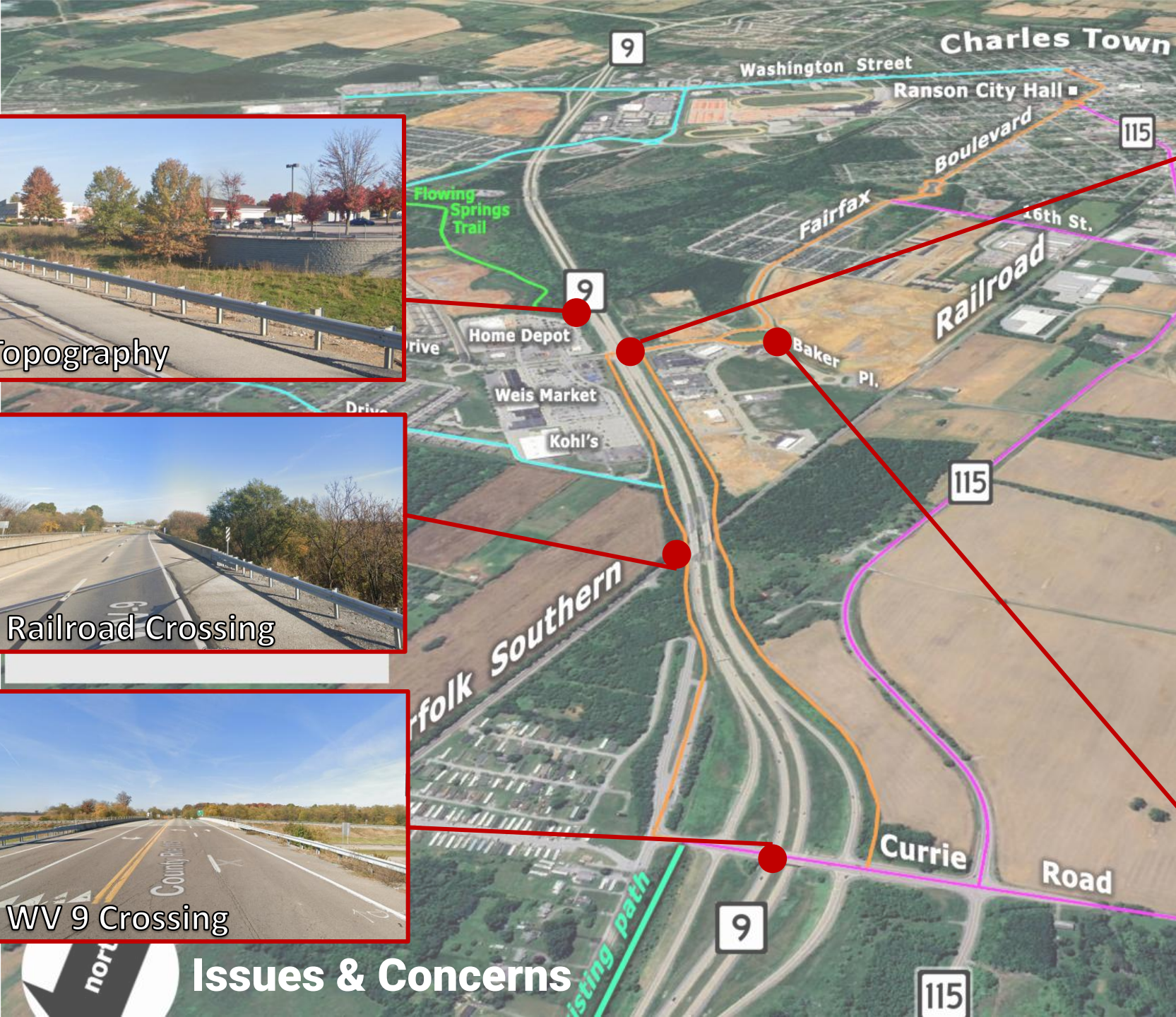
WV 9 Crossing



Elementary School



Access to Fairfax Blvd



# Issues & Concerns





Issues & Concerns



# WV 9 Crossing Options

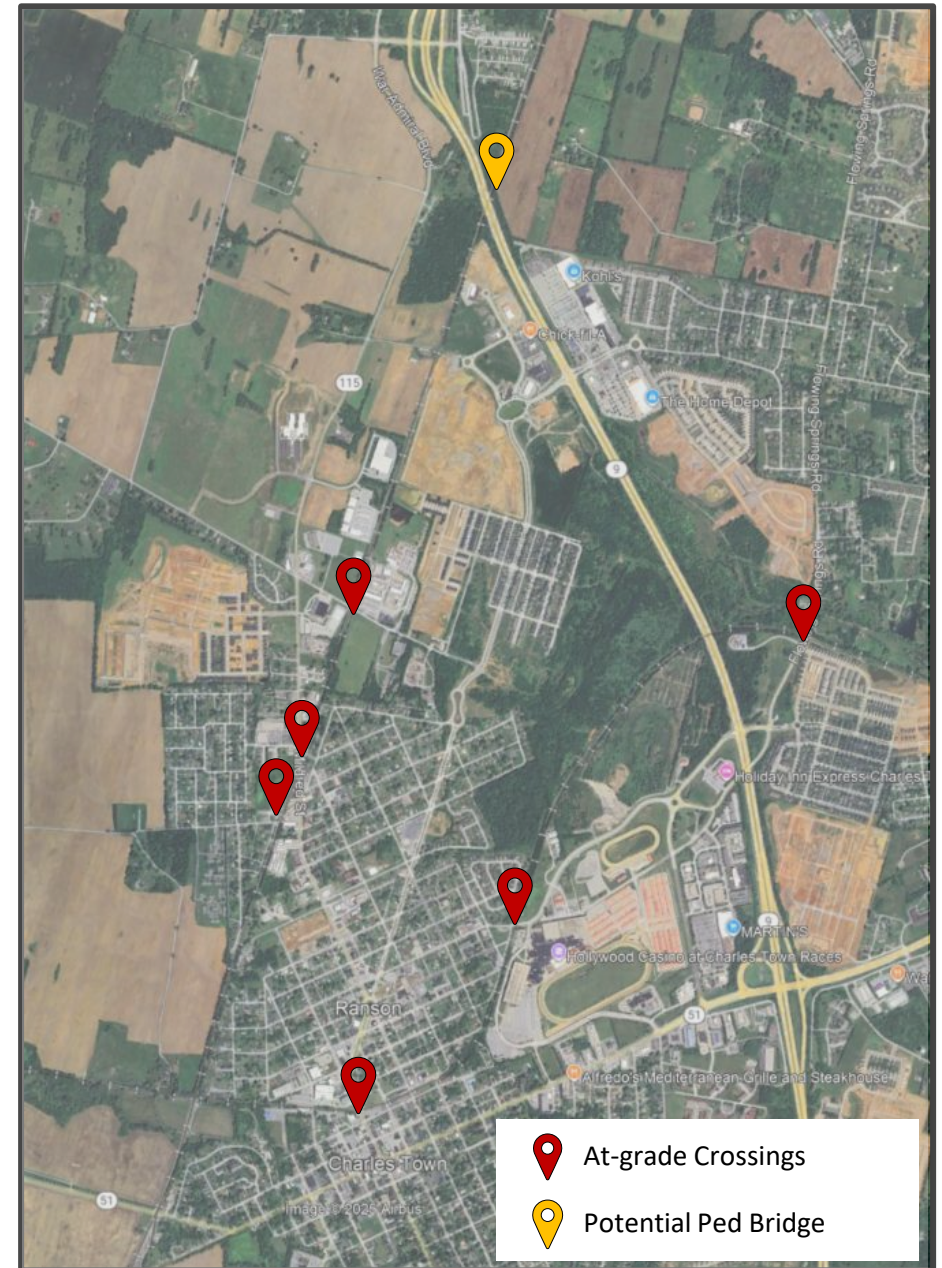
- At Fairfax Blvd
  - Culvert/Tunnel
  - Pedestrian Bridge
    - Feasibility Study





# Railroad Crossing Options

- Pedestrian Bridge
- Tie-in to Route 9 Overpass
- At-grade crossing



# Outreach & Engagement



# Steering Committee

- Comprised of key stakeholders
- Provide input & feedback
  - Assess current bicycle network
- Identify issues, concerns, improvements & opportunities
  - Safety, connectivity, destinations
- Identify at least 3 bike path alternatives





# Site Visit

- October 7<sup>th</sup>
- Purpose:
  - Visit areas of interest or concern
  - Identify pros and cons of sites
  - Feasibility of bike path

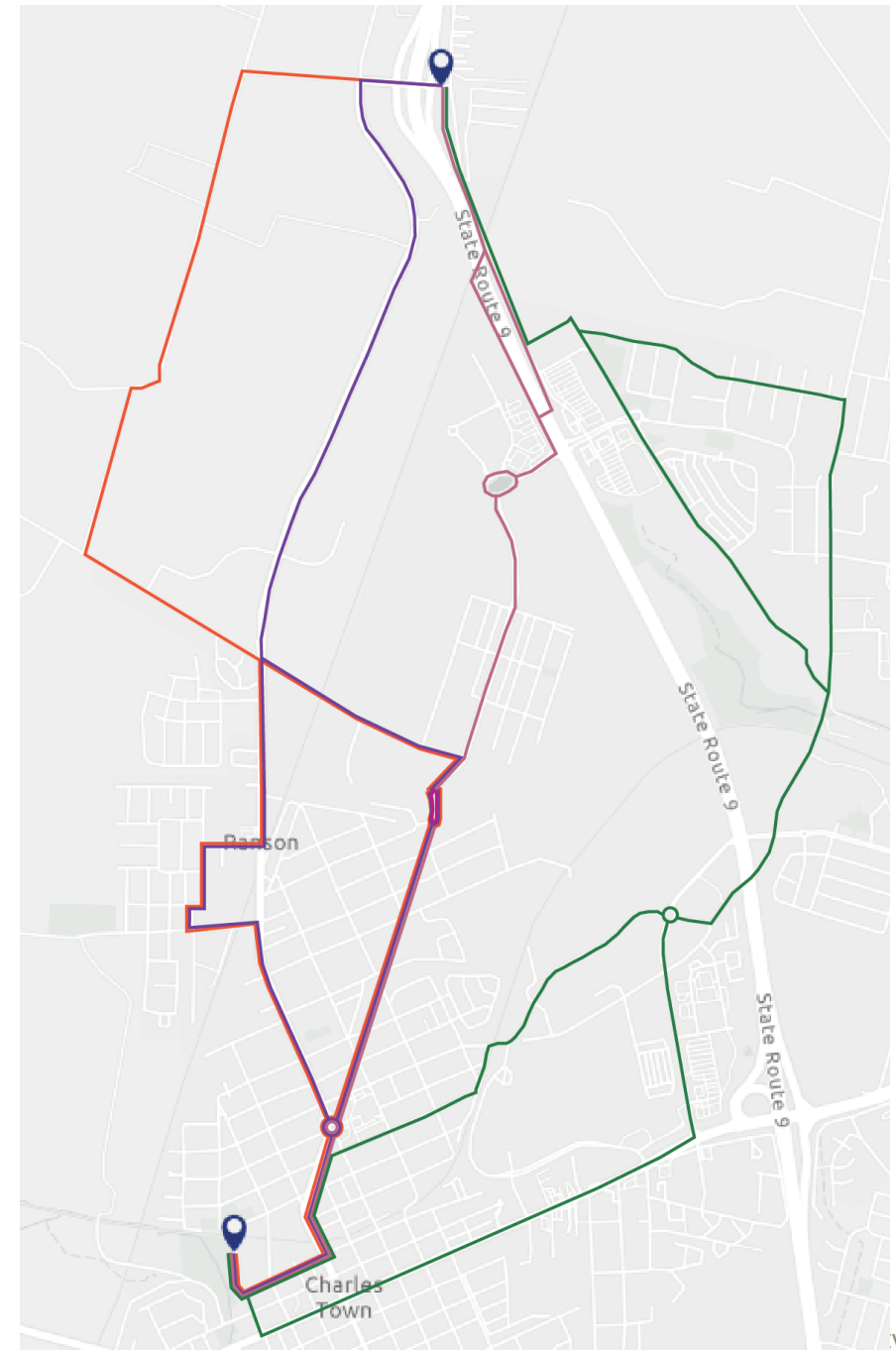




# Route Alignment Alternatives

# Routes Alternatives

- Four Route Alignments
  - Currie Road —
  - WV 115 —
  - WV 9 Crossing —
  - Flowing Springs Road —
- Consists of:
  - Primary Alignment
  - At least 2 Alternative Alignments



# Workshop & Public Comment

# Workshop

---

- Provide opportunity to voice opinions
  - Suggest improvements to alignments
  - Identify other points of interests
  - Identify pros and cons of alternatives
- Vote for preferred alternative
  - Narrow down preferred alternative





# Public Comment

- 30 Day Public Comment Period
  - December 15 - January 15
- Purpose:
  - Provide feedback on alternatives
  - Provide recommendations
  - Identify preferred alternative

[Link to Storymap](#)



**HEPMPO WV RT 9 Bike Study Workshop**

Currie Road    WV 115    WV 9 Crossing    Flowing Springs Road    Preferred Alignment

**Rank your preferred Bike Path Alignment**

☐ Currie Road Alignment A

☐ Currie Road Alignment B

☐ WV 115 Alignment A

☐ WV 115 Alignment B

☐ WV 9 Crossing Alignment A

☐ WV 9 Crossing Alignment B

☐ Flowing Springs Road Alignments A and C

☐ Flowing Springs Road Alignments A and D

☐ Flowing Springs Road Alignments B and C

☐ Flowing Springs Road Alignments B and D

**Currie Road**

**WV 115**

**WV 9 Crossing**

**Flowing Springs Road**

County of Loudoun, Jefferson County GIS Office, VGIN, Esri, TomTom, Garmin, SafeGraph, GeoTechnologies, ... Powered by Esri